



Spring  
cleaning

12

PREPARING FOR PASSOVER...

How to unleaven your home -  
physically and spiritually...



PASSOVER  
(PESACH)

14

PASSOVER-UNLEAVENED BREAD RETREAT

Join us online or in person...  
Retreat details and RSVP info...



spring  
retreat

15

SPRING RETREAT SCHEDULE

Meeting/broadcast times (PST)  
for the Spring Retreat...

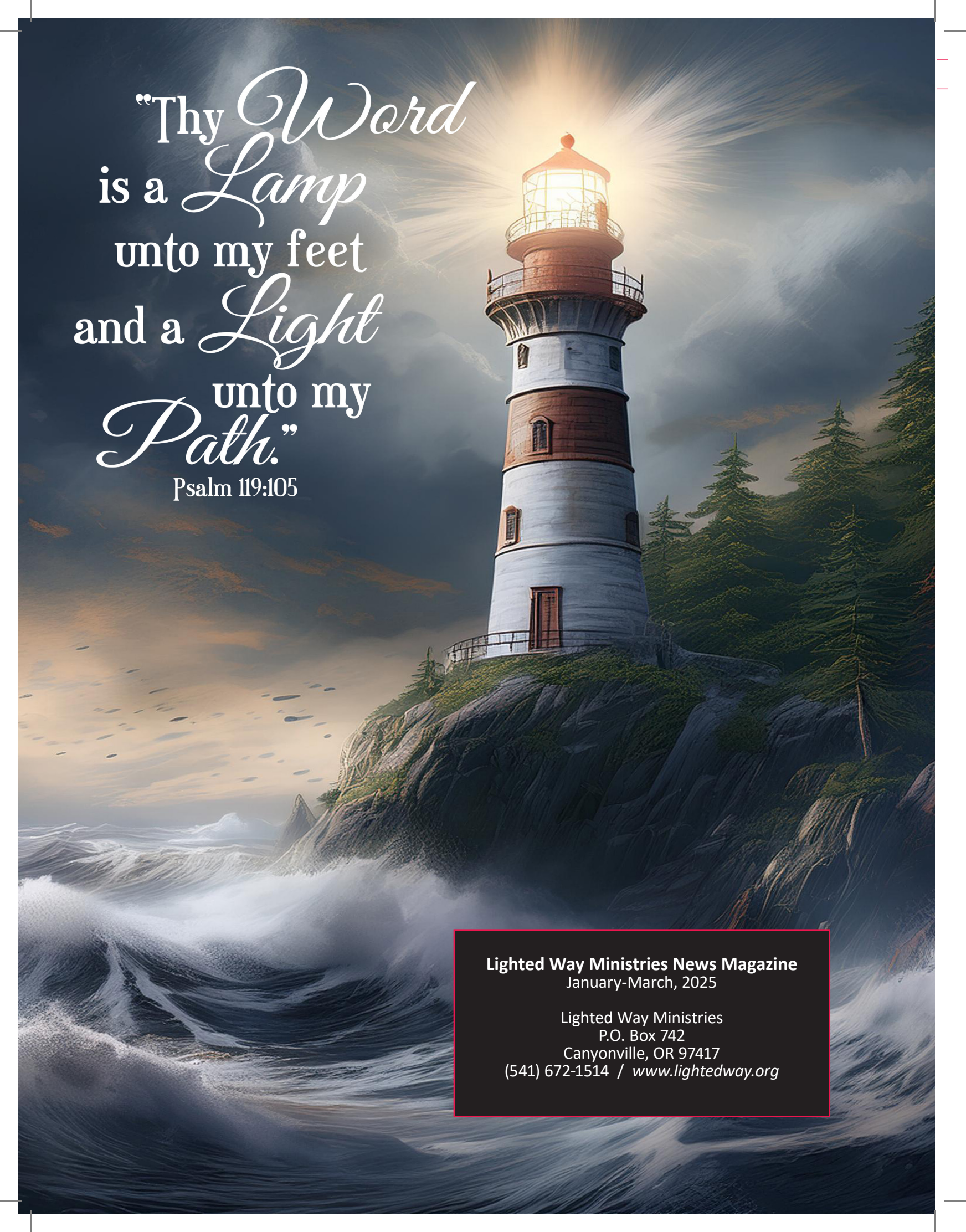
LIGHTED WAY MINISTRIES  
Quarterly Magazine

January-March, 2025

Thy Word is a Lamp unto my feet... Psalm 119:105

# The Great Exchange

What will a man give  
in exchange for his soul?

A lighthouse with a white body and brown accents stands on a rocky cliff overlooking the ocean. The lighthouse is illuminated from within, and its light shines brightly against a dark, cloudy sky. The ocean is turbulent with white-capped waves crashing against the base of the cliff. The scene is set during sunset or sunrise, with a warm glow on the horizon.

“Thy *Word*  
is a *Lamp*  
unto my feet  
and a *Light*  
unto my  
*Path.*”

Psalm 119:105

**Lighted Way Ministries News Magazine**  
January-March, 2025

Lighted Way Ministries  
P.O. Box 742  
Canyonville, OR 97417  
(541) 672-1514 / [www.lightedway.org](http://www.lightedway.org)

# The Lighted Way News Magazine



## THE GREAT EXCHANGE

**What will a man give in exchange for his soul?**—*In the Great Exchange, we may be trading our souls, without knowing it...*

5



## PREPARING FOR PASSOVER...

**How to unleaven your home, both physically and spiritually** — *With a Seder shopping list to help you prepare...*

12



## PASSOVER-U.B. RETREAT

**April 13-20, 2025**—*Save the dates and plan to join us online or in person... From Passover to Sanctified Living, and more...*

14



## SPRING RETREAT SCHEDULE

**Here's what to expect in the upcoming Spring Retreat**—*All meetings will be broadcast online except the Passover...*

15



## SPRING ORDER FORM INSERT

**Request LWM Materials**—*View our latest DVD's, books and materials and order you favorites today.*

### Lighted Way Ministries News Magazine (January-March, 2025 Issue)

Lighted Way Ministries  
Writers: Mark and Shauna Manfredine  
[www.lightedway.org](http://www.lightedway.org)

If you are not currently on our mailing list to automatically receive this quarterly news magazine, and would like to be added, please contact us directly.  
Past issues of our magazine are readable/printable on our website.

This free quarterly magazine is prayerfully written to encourage you in a deeper walk with *Yahweh*. The articles focus on studies of the Word, Bible prophecy, Spiritual Warfare, *Torah* Truth, and more...



# The Great Exchange

*What will a man give  
in exchange for his soul?*

## ***Are you Unknowingly Trading your Eternity?***

Scripture asks a powerful question: "what will a man give in exchange for his soul?" (Mark 8:37). *Yahweh* is shining His Light of Truth, just as He promised to do in Revelation 18:1-4. But less and less people are responding to it, rising up with it! Why?

The enemy of souls presents us with soberingly effective "trades" in which we - often unwittingly - barter away our own souls. Discover the seven most common ways hell convinces believers to barter away their Salvation, in what appears (at the time) to be a good and safe "trade". Discover the sobering reality of the Great Exchange. And see how the choices one makes are already determining their Eternal Destiny.

**Matthew 16:26** "*Yahshua* said, 'For what is a man profited, if he shall gain the whole world, and lose his own soul? Or what shall a man give in exchange for his soul?'"

Discover potential blind spots in order to make the right choices in the Great Exchange, which is now going on for YOUR SOUL...

## The Great EXCHANGE

*John 3:19-20 — “And this is the condemnation, that LIGHT is come into the world, and men loved darkness rather than Light...”*

“Buyer beware!” is a well-known warning, encouraging consumers to exercise caution as they participate in both local and online marketplaces. Like a field laced with hidden landmines, the marketplace is increasingly fraught with false representations, omissions, fraudulent business practices, and abusive strategies designed to mislead potential buyers.

Frankly, every buyer hates to be cheated. So why does it happen? How is it possible for a buyer to end up with something less than he intended, or believed was being purchased? Dishonest sellers commonly use a bait-and-switch technique, causing the buyer to believe he is trading for one thing, when he is really bartering for another. In this sort of a deal, what the buyer believes is significantly different from the reality, known by the seller. In fact, in order to achieve the “sale” the buyer is counted as a “mark” upon whom the seller preys through the deceptive art of illusion.

A classic marketplace swindle is the “The Three Shell Game,” a con where a skilled hustler presents three walnut shells, with a small pea hidden under one of them. When a passerby steps up to his table and pays the required game fee, he does so believing he has a fair chance to win. From the buyer’s perspective, it seems that if he watches closely enough, he will win the promised payout. But the reality, known to the deceptive hustler, is that the system is rigged to ensure the “mark” will always lose. Through



sleight of hand and quick movements, the hustler ensures that the pea is always under a different shell than the one the “mark” chose, regardless of how closely he watches.

As annoying as it is to be cheated at any time, the carney huckster may con his victim out of \$20.00 and be done with it. But the devil has taken the “marketplace” swindle to a whole other level. In fact, however proficient a conman may become, even the greatest mortal skill pales in comparison to the devil’s own mastery of deception and “marketplace” craft. Satan wields his bait-and-switch cons most epically in what we will call “The Great Exchange”.

Like the marketplace conman, who passes himself off as a reputable merchant offering an above-board deal, the devil conceals his true identity and purpose from his victim—in fact, the victim has no clue that he has entered the Great Exchange and is now bartering with the devil. Yet, unbeknownst to him, the deceived buyer is not only bartering with Hades, but also the unstated currency on the “trade table” is not what he thinks. He is actually trading for his own soul.

*(continued on page 6...)*

### Scales: Symbolize both Purchase & Judgment

Scales have long symbolized purchase. In Bible times, the scales were used in the marketplace. Long before money was developed, purchases would be made by trade, using scales. The merchant would place the grain or items being sold in the pan on one side of the scales. And the prospective buyer would place his payment in the pan on the other side of the scales. When the payment equaled the purchase, the scales were balanced. This was considered to be a fair trade.

A “pair of balances” is also a symbol of justice and fair dealing in judgment, as Scripture tells us in Job 31:6; Psalms 62:9 and Daniel 5:27.

- “Let me be weighed in an even Balance (*Mozanaim*)...” Job 31:6”
- “He (*God*) has weighed you on His Balance Scales (*Mozanaim*), and you fall short of what it takes...” Daniel 5:27 <sup>(CEV)</sup>

The second primary constellation is ***Mozanaim***, “the scales” (now called *Libra*). This celestial set of balances represents both meanings: purchase and righteous judgment. In other words, the symbol of the Scales represents the rendering of fair Judgment, by the Almighty, which is either Eternal Life, or everlasting Death. Only those who claim *Yahshua* as their Saviour will receive the Judgment of Eternal Life. For only the precious Blood of *Yahshua* balances these Scales, when our sins are weighed on Judgment Day. This is the Price of our Redemption (*1 Cor. 6:19-20*).

**But, what many don’t realize is that the devil knows all about these Scales... Through deception, he gets us to spurn and trade away our Salvation, by entering into a deadly “Great Exchange”...**

(continued from page 5) ...The first person to experience this Great Exchange, was Eve, the Mother of us all. And in this tragic story of the original Sin, we may draw eye-opening comparisons which reveal the five characteristics of the Great Exchange:

### 1. EXCHANGE! WHAT EXCHANGE?

—the Great Exchange is carefully kept unseen from the trading person. Even to Eve's perfect senses, the whole supernatural encounter seemed innocent and innocuous. Eve had no idea that she had entered the devil's marketplace and was engaging in the first-ever-with-a-human-being Great Exchange.

### 2. WHO WAS THAT MASKED MAN?

—Satan, Hell's Merchant in the Great Exchange, always obscures his true identity and purpose. Eve had no idea that the "enlightened serpent" with whom she was conversing was really the devil, having deceptively disguised himself in the form of one of *Yahweh's* most beautiful and alluring creatures.

This masquerade technique was not unique to Eden. It is a weapon of deception that the kingdom of Hell commonly employs.

***"For such are false apostles, deceitful workers, transforming themselves into the apostles of Christ. And no marvel; for Satan himself is transformed into an angel of light. Therefore it is no great thing if his ministers also be transformed as the ministers of righteousness; whose end shall be according to their works."***

*2 Corinthians 11:13-15*

Although he disguises his predatory intent, the devil's goal in the Great Exchange is always the same: to



devour and eternally destroy the person with whom he is "trading". For this reason, we must be spiritually vigilant and prayerfully discerning. For our blindness gives the devil a dangerous advantage (*2 Corinthians 2:11*).

***"Be sober, be vigilant, because your adversary the devil, as a roaring lion, walks about seeking whom he may devour."***

*1 Peter 5:8*

### 3. PEACE, SAFETY & SUDDEN DESTRUCTION

—in the Great Exchange, the human "mark" will have no sense of their true danger—and, in fact, will most likely feel safe and at ease. When Eve entered the conversation with the Serpent, had she felt threatened, she could have fled! Surely, had she known she was entering into the supernatural Marketplace of the Great Exchange, she would have cried out for Help!

From her casual response in this encounter in the beautiful Garden of Eden, we may see that Eve believed there was no danger to her. Perhaps she reasoned that this was *Yahweh's* Garden, after all! What harm could possibly come to her in this perfect place? But, as Eve soon discovered, nowhere is safe when one departs from *Yahweh's* Word.

But, as he did with Eve, the devil still carefully veils his threat, often causing

his intended victim to feel the most secure, when destruction is imminent.

***"For when they shall say, Peace and safety; then sudden destruction cometh upon them, as travail upon a woman with child; and they shall not escape."***

*1 Thessalonians 5:3*

### 4. LIGHT: LOVE IT OR LEAVE IT!

—the traded currency in the Great Exchange is always the same. It is Light. In Scripture, Light represents Truth. And Light-Truth is inseparably connected with Life. *Yahshua*—Who is the Way, the Truth and the Life—is also the Light of the World:

***"I Am come a Light into the world, that whosoever believeth on Me should not abide in darkness."***

*John 12:46*

Not only is *Yahshua* the Word and Light, but also Scripture (*the written Word*) is Light, with the *Torah* as its radiant epicenter!

***"Thy Word is a Lamp unto my feet, and a Light unto my path."***

*Psalms 119:105*

***"For the Commandment is a Lamp; and the Law is Light; and reproofs of Instruction are the Way of Life."***

*Proverbs 6:23*

As Scripture tells us in *John 1:9*, *Yahweh* shines His Light of Truth upon **every** person at some point in their

lives. What we do with it, when we are presented with the Light of Truth, determines whether we'll be blessed with continuing Light, or whether Truth will be taken away.

One key thing about Heavenly Light is that it never stays stagnant. Day by day, our level of enlightenment is either growing brighter or dimming.

***“But the path of the just is as the shining Light, that shineth more and more unto the perfect day.”***

*Proverbs 4:18*

As we see in John 12:46 and John 1:9, *Yahweh* shines the Light of Truth upon the life-path of every person on earth, at one point or another. The question is what we do with the Light, when it shines upon us. If we receive the Light and walk in it, more will come, eventually fully dispelling darkness and deception from our lives! In fact, the Light of Truth is so transforming and so effective a protection, that the enemy is unable to deceive anyone who is shielded by *Yahweh's* Armor of Light!

***“The Night is far spent [Night spiritually represents the time when sin and wickedness grow and prosper], the Day is at hand [Day spiritually represents the time when the Light of Truth shines - illuminating the whole world with the glory of Yahweh - Revelation 18:1]: let us therefore cast off the works of darkness, and let us put on the Armour of Light.” Romans 13:12***

At first it sounds so simple. *Yahweh* shines the Light of Truth. Light dispels darkness. How could anyone be deceived when *Yahweh* employs His Weapon of Light? God shines the Light, but actually **we** choose how much of it shines upon our Path by

our obedience to it. If we reject the Light, ***or even the opportunity to see it***, the blessing of Light dims and goes out, leaving the person in a deepening darkness that is actually the result of their own choosing!

A retired school teacher lost her life savings in a business scheme that had been elaborately promoted to her by an investment swindler. When her investment disappeared and her dreams of financial security were shattered in her golden years, she went to the Better Business Bureau.

When the agent looked up the business in question, he quickly saw that the company had numerous unresolved complaints. What's more, there were government actions against this company.

Showing his findings to the stricken woman, the man shook his head, “Ma'am, I'm so sorry that you've lost your savings. This investment that you put your money into is nothing short of a Ponzi scheme. You've been swindled!”

“Before investing everything you had in your savings, why didn't you come to us and find out whether or not this was a reputable company and a good investment? Didn't you know about the Better Business Bureau?”

“Oh, yes,” the woman tearfully admitted. “I knew about you. But I didn't come to you first because I was afraid you'd tell me not to get involved with this investment.”

How regrettable and crazy this poor woman's decision may seem to us, from a financial perspective! But, how much more epic is the error when we make it in the Great Exchange, where

the “savings” we are trading away is our Eternal destiny! Yet, this is exactly what we do, when we do not love the Light of Truth. We are tempted to push the Light away, for if it shines too starkly upon the darkest recesses of our hearts and homes, sins might be exposed. And we may find ourselves needing to repent.

***“And this is the condemnation, that Light is come into the world, and men loved darkness rather than Light, because their deeds were evil. For every one that doeth evil hateth the Light, neither cometh to the light, lest his deeds should be reproved.”***

*John 3:19-20*

By how we handle Light, we are choosing whether we are able to be deceived. Thus, rather than being victims of Hell, we are willful participants. For only those who do not love Light will fall prey to the deceptions of darkness.

***“And with all deceivableness of unrighteousness in them that perish; because they received not the love of the truth, that they might be Saved. And for this cause God shall send them strong delusion, that they should believe a lie: That they all might be damned who believed not the Truth, but had pleasure in unrighteousness.”***

*2 Thessalonians 2:10-12*

No human can hope to resist the wiles of the devil through out-thinking, out-perceiving, or out-intuiting deception—especially the over-mastering level of deception, which characterizes the Last Days (Matthew 24:24). Eve couldn't do it, in her un-fallen state, while relying on her own senses or intuition alone. How much less can we, after the Fall?

*(continued on page 8...)*

(continued from page 7) ...But while we cannot, by strength of willpower or intellect, defeat overmastering deception, we do choose whether or not we are deceivable.

We often unknowingly choose to be deceived by rejecting Light, and thereby becoming deceivable, as we read in 2 Thessalonians 2:10-12.

**5. THE END IS THE WAY OF DEATH**—the actual transaction which is received by the person in the trade is death. Yes, how we handle Light is a life-and-death matter.

The one and only Safeguard—the Shield—*Yahweh* has provided against being deceived. The only Shield against deception is Light or Truth—specifically, **a love of the Truth**. Repeatedly, in Scripture *Yahweh* warns that if we do not love Truth,

we **will be** deceived. In other words, loving Truth prevents deceivableness. Thus, loving Truth is our only protection from falling prey to deception. Conversely also, failing to love Truth comes with the curse, or consequence, of being able to be deceived.

Soberingly, if we are able to be deceived—deceivable—we surely will be deceived by the overmastering level of lies which hell is putting upon the world in these final days. We may know this, beyond question, because the Biblical consequence for failing to love the Truth is that we will be sent “strong delusions” causing us to ultimately “believe lies”, exchanging the Hope of Eternal Salvation for Eternal Damnation.

*“And with all deceivableness of unrighteousness in them that perish; **because they received not the love of the truth, that***

***they might be Saved. And for this cause God shall send them strong delusion, that they should believe a lie: **That they all might be damned who believed not the Truth, but had pleasure in unrighteousness.**”***




*2 Thessalonians 2:10-12*

**TRADING DARKNESS FOR LIGHT IN THE GREAT EXCHANGE**

In the Great Exchange, the devil is not so foolishly overt as to tell us that he has come for our souls. He knows that such an approach would largely insure his failure. What would Eve have done, had the devil come to her in a forthright manner, telling her plainly his identity and purpose?

Leaning up against the Tree of the Knowledge of Good and Evil, a dark angel calls out to Eve, “Hello, Eve! I’d just like to start off by introducing

**Common Trades in the Great Exchange...**

			
<b>The Devil’s Con— Name of the Game:</b>	<b>Following Extra-Biblical “Light”</b>	<b>Harboring Hate, Rage and Anger</b>	<b>Allowing Bitterness &amp; Unforgiveness</b>
<b>What the Person Believes He/She is Getting:</b>	In turning to non-Scriptural sources and setting aside the Bible, we believe we are seeking more Truth...	In hating and being angry or wrathful towards another, we believe we are giving them what they deserve...	In holding unforgiveness, grudges and bitterness, we believe we are holding them accountable and are unaware of bitterness...
<b>What the Person is Actually Getting by Unwittingly “Trading” with the Devil:</b>	But actually, in turning to non-Scriptural sources and setting aside the Bible, we are rejecting Light. Thus, we become increasingly blind and our former enlightenment dims...	Scripture tells us (1 John 2:9-11) that if we hate another, we will be caged in darkness. We only remain in the Light when we love others, remembering <i>Yahweh</i> doesn’t give us what we deserve...	But actually, when we hold unforgiveness, grudges and bitterness, we become imprisoned in deepening darkness. In failing to give others grace, we lose it ourselves...

THE GREAT EXCHANGE...



myself. I was formerly called Lucifer, for I once was a bearer of *Yahweh's* Light. But I forsook that Light. I rebelled. And now my name is Satan, or the devil. I've come here today, Eve, specifically because I want to invite you to join my rebellion. You'll die of course. Death is the outcome of rebellion and rejecting Light. But, I'm still hoping you'll eat this forbidden fruit, lose your immortality, and join me on the side of Darkness."

Now, perhaps Eve would have been momentarily paralyzed by shock, allowing the devil time to actually say all this to her. But by this point, Eve would surely have fled the scene, leaving the devil to eat her dust in total failure! The direct approach wouldn't work, which is exactly why Satan uses artifice, illusion, and deceit.

So what can we learn from Eden to help us identify the Hellish Huckster and avoid trading away our own Salvation in the

Great Exchange? We've already identified the five common characteristics of this Merchant and his Marketplace. But in addition to the gift of discernment which we need to recognize Spiritual Reality, we can also discern that we've entered the deadly Great Exchange deal with the devil by the commodity on the "table". As we saw in the fourth point on pages 6-7, when the devil comes for our souls, he uses the "currency" of trading Light for Darkness.





Since the Great Exchange is hidden from our overt gaze, it is by recognizing the Light vs Dark currency that we can discern a Deal is about to go down. How does it look when we're facing the devil and unwittingly engaging in a Light for Dark trade? To answer this, let's identify the most common Trades in the Great Exchange. In so doing, may we better see them from what they really are and may we be forearmed and victorious when we face the test of the Great Exchange, in the future. There are seven

common Trade-scenarios (listed in the table below) which the devil employs most effectively to entice us to exchange Light for Darkness. Let's look at them one-by-one.

**FOLLOW EXTRA-BIBLICAL "LIGHT" AS OUR SOURCE OF TRUTH**



In the first scenario of the Great Exchange, believers are seeking greater enlightenment. However, as Eve did before them, they have been deceived into rejecting God's Word as the ultimate Source of Truth. Having turned away from Scripture, they now seek other sources of Light. (continued on page 10...)

			
<b>Loving the World, Wealth &amp; Power</b>	<b>Pursuing Occult Healing Remedies</b>	<b>Prioritizing Family Approval Over Yah's</b>	<b>Submitting to Man's Will Over Yahweh's</b>
We may be tempted to believe that we can focus on wealth and worldly position while still holding onto <i>Yahweh</i> ...	We may be tempted to seek relief from pain and illness from any source. We may believe all "natural" remedies are good...	We may be tempted to compromise or forsake Torah-obedience in order to please-appease our family love bonds...	Under the threat of persecution or the wrath of an authority, we may be tempted to submit to man's will over <i>Yah's</i> ...
But actually, the love of money is the idolatrous root of all evil. Light involves loving <i>Yahweh</i> supremely and having a "single eye"—which is focusing on <i>Yahweh</i> and keeping Him First...	But actually, many modern "natural" remedies are actually from the occult. When we seek healing from Hell, darkness and death are the consequences...	But actually, if we choose the approval of our family members over seeking <i>Yahweh's</i> Blessing, we will find ourselves in dimming darkness, losing the Light we had forsaken...	But all other authorities are lesser than <i>Yahweh's</i> ultimate Authority. We always ought to obey God over man, no matter the cost. Righteous submission is never disobedient to <i>Yahweh</i> (or Torah).

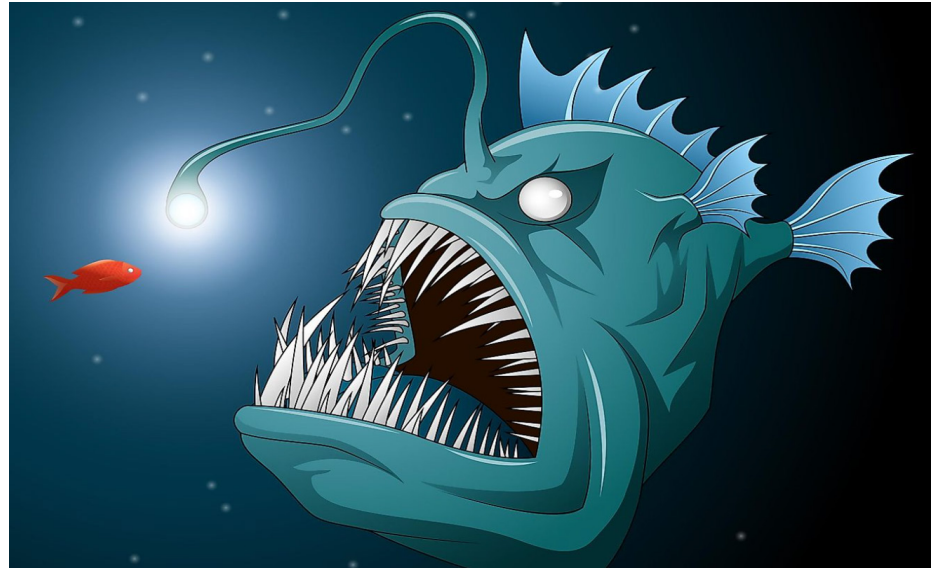
(continued from page 9) ...But, *Yahweh's Word is* the ultimate Source of Light and Truth (2 Peter 1:16-21). If we turn our backs on God's Word, to embrace other sources and authorities, we are following the devil's false "light". History, archaeology, science, and the writings of supposed Christians in any age all have their place as useful resources. But history can be manipulated and inaccurately reported; artifacts of science and archaeology can be misinterpreted, based upon the bias of the examiner; and the writings of other Christians can be a mix of that which is true along with areas of misunderstanding. Thus, extra-Biblical sources cannot replace the Word of God as our ultimate source of Truth. The reliability of these extra-biblical sources is to be determined by how they measure up with Scripture, not the other way around.

Most dangerous of all is the enticement of relying on our own emotions, experiences or perceptions over Scripture. In so doing, we make our senses the ultimate Source of Truth. And if Eve couldn't trust the reliability of her own senses and perceptions, when she was unfallen, how much less can we?

Believing anything other than Scripture to be our ultimate Source of Light is much like the unsuspecting fish following a bobbing glow in the ocean depths, only to discover—often too late—that the alluring glow was really the false light of a predator's bioluminescence. And behind that false light are terrible **teeth**.

### **HARBOR HATE, ANGER, AND RAGE**

In the next scenario of the Great Exchange, the enemy entices many



believers to stay in the spiritual cage of anger, hate and wrath. The devil even gets us to feel justified in so doing, since that hateful person in our lives did us wrong, after all. But, the Bible tells us that as soon as we harbor hate, we have forsaken the Light.

***“He that saith he is in the Light, and hateth his brother, is in darkness even until now. He that loveth his brother abideth in the Light, and there is none occasion of stumbling in him. But he that hateth his brother is in darkness, and walketh in darkness, and knoweth not whither he goeth, because that darkness hath blinded his eyes.”***  
1 John 2:9-11

### **ALLOWING BITTERNESS & UNFORGIVENESS**

The enemy often gets us to trade with him by preying upon our carnal nature and fleshly desires. When we have been mistreated by someone, we can easily justify our bitterness and unforgiveness as “holding them accountable”. It is good to be held accountable in the Body of Messiah. But it is not good to misuse this term, applying it as a covering which allows

the toxic poison of bitterness to build up in the soul. This is a personal prison which keeps us from the Light of Life. And, when we do not forgive others, *Yahweh* “unforgives” us for our sins, as a consequence (see *Matthew 18:21-35; Matthew 6:12-15*).

One of the most dangerous aspects of being in the prison of bitterness is the blindness, which always comes with this spiritual darkness. The embittered person is always the last one to know he's bitter. But as the darkness of this prison deepens, the imprisoned former believer is less and less able to see that the prison is one of his own making. The door stands ajar. He can leave, by the power of Messiah, at any time. And in denying grace to another, he loses Grace for himself as well.

***“For with what judgment ye judge, ye shall be judged: and with what measure ye mete, it shall be measured to you again.”***  
Matthew 7:2

### **LOVE THE WORLD, WEALTH AND POWER**

Having a “single eye” as it says to do in *Matthew 6:22-23*, means having a single, supreme Point of Focus. As it says in *Deuteronomy 6:4-9*, this Focal

Point—the supreme Object of our Love and Worship is to be *Yahweh*. Heeding the *Shema*, as it's called in Hebrew, is the very heart of walking in the Light of Truth.

**“Hear, O Israel: Yahweh our God is one [one means first, supreme, and solely God] Yahweh: And thou shalt love Yahweh thy God with all thine heart, and with all thy soul, and with all thy might.”** Deuteronomy 6:4-5

### PURSUING OCCULT NATURAL HEALING REMEDIES

None of us are at our best when we are sick or in pain. In the next scenario, the enemy tempts those who are suffering with long-term illnesses or pain to pursue healing at any cost. Many ancient mystic and occult practices have become accepted, main-stream practices in the field of natural medicines. Because they are suffering, and these remedies do not involve addictive medications with physical side-effects, many believers are willing to try anything to find relief. But if we seek healing from occult practices, knowingly or unknowingly, demonic doorways, legal ground and curses are unleashed upon us.

This is exactly what the Bible tells us happened to Israel's king Ahaziah who consulted with Ekron, seeking healing from the practices of *Baal-Zebub*. In fact, Elijah told Ahaziah that because he had looked for healing from Hell, he would “certainly die!” (1 Kings 22:51; 2 Kings 1:18).

For more information on this, please see Shauna Manfredine's book *Escaping from the Dragon's Jaws*, and check out her two-part series (in our online video channels) titled: *Exposing the Occult in New Age Medicines*.

### PRIORITIZING FAMILY APPROVAL OVER YAHWEH'S BLESSING

In the next scenario of the Great Exchange, the enemy pressures many

believers to compromise and even forsake *Torah*-obedience entirely, in order to keep the family happy. Adult children have turned on their aging parents, warning that unless they adopt a more liberal view, they will not be welcomed at family gatherings, nor be allowed to spend time with their grandchildren.

In this painful manifestation of the Great Exchange, parents know the Truth, but are tempted to turn from it, in order to preserve family relationships. To the person in this Trade, seeking the comforting path leads to darkness. To those faced with such a Hellish pressure-scenario, *Yahshua* plainly says:

***Think not that I Am come to send peace on earth: I came not to send peace, but a sword. For I Am come to set a man at variance against his father, and the daughter against her mother, and the daughter in law against her mother in law. And a man's foes shall be they of his own household. He that loveth father or mother more than Me is not worthy of Me: and he that loveth son or daughter more than Me is not worthy of Me.*** Matthew 10:34-37

### SUBMITTING TO MAN'S WILL OVER YAHWEH'S

Of all the devil's Great Exchange scenarios, one of the most difficult is when our worship of *Yahweh* is impeded—or thwarted altogether—by a forbidding human authority. Employees have been tempted to give up Sabbath-keeping to heed the will of their human boss. Wives who are convicted of *Torah*-Truth, have been tempted to set it aside, because their husbands forbid or threaten them.

Beyond the obvious emotional stress and pressure from one's spouse or authority figure, caving into the pressure may even seem right in our eyes. After all, isn't submission to authority something the

Bible tells us to do? **Citing Scripture to justify disobeying *Yahweh* is just the kind of twist the devil likes to add to give his offer a “righteous” veneer.** But, doing the will of man over God is never righteous, however it may first appear.

Shadrach, Meshach and Abednego did not bow to the idolatrous image, even though the King had commanded them to do so, on pain of death in the fiery furnace if they disobeyed. The apostles did not stop preaching the Gospel, when the dignitaries of Rome demanded it, nor even when they were persecuted, beaten and imprisoned for it. And a wife should not fail to keep any part of the *Torah*, simply because her husband forbids her.

In trials like these, the face of the human authority is visible to the believer, but the face in the shadows is none other than the the old Serpent, the Hellish Huckster of the Great Exchange. Satan is the one using people to bring you to his Trading Table, offering darkness over Light through pressure and even persecution. In these situations, the answer of the apostles remains the as the choice for Light over Darkness: “We ought to obey God rather than man,” Acts 5:29.

It all comes into perspective in *Yahshua's* probing question: **“For what is a man profited, if he shall gain the whole world, and lose his own soul? Or what shall a man give in exchange for his soul?”** (Matthew 16:26). Consider carefully: what will your answer be when the devil offers Darkness for Light in these seven ways? May you stand strong in the choice for Light—no matter the cost. For in loving the Light, you are preserving your soul!

# Preparing for Passover:

## *Unleavening Our Hearts and Homes*

*"...Know ye not that a little leaven leaveneth the whole lump? Purge out therefore the old leaven, that ye may be a new lump, as ye are unleavened. For even Christ our Passover is sacrificed for us. **Therefore let us keep the feast, not with old leaven, neither with the leaven of malice and wickedness; but with the unleavened bread of sincerity and truth.**" 1 Corinthians 5:6-8*

Yahweh lovingly instructs His people to gather together to observe the annual holy Festivals. But keeping the Spring Feasts doesn't just involve showing up at the Appointed Time. It also involves at-home preparation for Passover and Unleavened Bread—a process which ideally begins when the time for the Feast is still a month or two away.

### 3+ Weeks Before the Feast:

Begin unleavening your home. The process of unleavening a home involves deep cleaning. It was because the preparations for Unleavened Bread involved a deep cleaning this process came to be called "spring cleaning."

Go through your cupboards and pantry. Clean everything out as you take note of each food item's ingredients. Your purpose is to identify all items containing leaven. As you go through your pantry and cupboard. Pull out the foods containing leavening. At this stage, leaven doesn't have to be removed, or destroyed. But leavening agents should be noted and put in a separate area (*this is a good stewardship practice*) which helps you to plan for and incorporate leavened items into recipes in order to mostly use them up before Passover.

According to *Torah*, leavened items must be completely removed from the

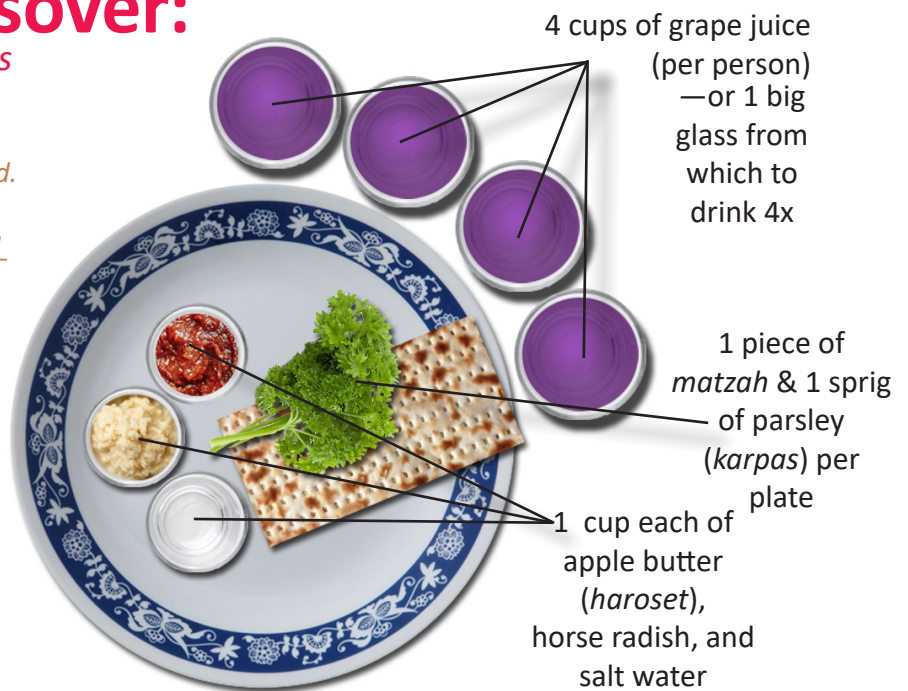
home and destroyed on or by Passover:

**"Unleavened bread shall be eaten seven days; and there shall no leavened bread be seen with thee, neither shall there be leaven seen with thee in all thy quarters."**

*Exodus 13:7*

In preparing for Passover by noting and planning to use up the leavened foods prior to Passover, you will have minimal food waste. Certainly, it is also a much more thorough way to unleaven your home, according to the biblical instruction.

What should you look for when taking a leavening inventory of your cupboards and pantry? Leavened foods include breads, pancake mixes, baking mixes of all kinds, crackers, cereal, and many more foods. Check the ingredient labels for raising agents such as raising yeast, baking soda, sodium bicarbonate, and baking powder. Items like Brewer's yeast (*even though it uses the name "yeast"*) are not leaven, because they are not raising agents.



The unleavening process doesn't stop with the household pantry. Leaven is also spiritual. Spiritual leaven is sin. As you go through your home, cleansing it from physical leaven, prayerfully also remove any spiritual leaven which you may find. In this search, it is a blessing to claim Psalm 139:23-24. Spiritual leaven includes items like: ungodly books, movies, or games and images or idolatrous souvenirs (*Note: often "cultural" items are connected with demonic practices*).

**"The graven images of their gods shall ye burn with fire. Thou shalt not desire the silver or gold that is on them, nor take it unto thee, lest thou be snared therein: for it is an abomination to Yahweh thy God. **Neither shalt thou bring an abomination into thine house,** lest thou be a cursed thing like it: but thou shalt utterly detest it, and thou shalt utterly abhor it; for it is a cursed thing."** Deuteronomy 7:25-26

During the unleavening process involving foods, you plan to do your

## How to Set up Your Table for Passover at Home:



The Passover table should have the items shown in the picture above. If you are keeping Passover at home, you may join us online this year. Set your table and watch and participate as we take you through the Passover experience and tell you when to use each item.

best to eat up the food quickly prior to Passover, to avoid waste. But while this is good stewardship for the pantry, it is not how one should handle spiritual leaven. Spiritual leaven, once identified, should be immediately destroyed. The loss of money is not a consideration. In the Scriptures, we have a powerful example of this in the story of how the believers in Ephesus came together to burn their mystical, occult books. Scripture tells us that the monetary value of the magical books they burned came out to 50,000 pieces of silver! One might wonder why they didn't sell their books and keep the money?

As we saw in Deuteronomy 7:25-26, items which are classified as a spiritual abomination are to be burned with fire. We are not to sell them for money. This process of burning the items brings the devil's rights and ground gained in using these objects to a complete end. If we were to pass the item on to someone else, we would be passing on the curse. That is not something Yahweh's people are ever to do.

### 1 Week Before the Feast:

Unleaven your freezer(s) and refrigerator(s) in the same way you

unleavened your cupboards and pantry. Collect all your remaining leavened items in one area for easy removal just before Passover.

### 1-2 Days Before the Feast:

If you are not physically joining us at Lighted Way Ministries for Passover (in which case, we'll be providing the Seder foods), you will need to purchase the Seder food items. See the list of needed foods in the yellow panel at the right. When the day of Passover arrives, set up for the Passover Meal as shown in the diagram above and on the prior page.

If you will be keeping Passover at your home this year, we invite you to "join us" online. We will be broadcasting this year's Passover Meal and program. To join us, simply set your Passover table as shown and play our live Passover broadcast video (*at the scheduled time*) so that everyone at the table can see it. During the Passover broadcast, we'll take you through the Passover Meal showing you what to do, step-by-step, and explaining the spiritual meaning of each Passover symbol. We pray you and yours will have a blessed Passover/U.B.!



## What you Need for Passover/Unleavened Bread...

### Get Enough Unleavened Bread for the Whole Week of Unleavened Bread:

Since the *Torah* commands (Exodus 12:15; Exodus 13:6) each family member to eat at least a small piece of unleavened bread at every meal throughout the whole week of Unleavened Bread (all 7 days), you will need to make sure you have enough unleavened bread for Passover and the week of Unleavened Bread.

If you are buying the *matzah*, we typically get 1-2 boxes of *matzah* per family member (depending on how big a piece they will eat each meal) to last through all seven days of the Feast. Check with your local grocery store. Some stores will order *matzah* upon request. If you cannot get *matzah* from your local grocery store, you may order it online or you can get a recipe for it and make your own homemade *matzah* (this is why you need to plan ahead).

### What you need for the Passover Meal (See the Place Setting picture at the top of the page):

- *Matzah* (1 sheet per person)
- Horseradish (1 small cup size per person—we use plastic candy cups made for weddings)
- *Haroset* (apple butter) (1 small cup size per person)
- Salt water (1 small cup size per person) – mix water with salt, enough to taste salty
- Parsley (1 small bunch of parsley per person)
- Grape juice (4 small cups per person)



# Passover/Unleavened Bread Retreat

## Retreat Dates: April 13-20, 2025

*"These are the Feasts of Yahweh, even holy convocations, which ye shall proclaim in their seasons. In the fourteenth day of the first month at even is Yahweh's Passover. And on the fifteenth day of the same month is the Feast of Unleavened Bread unto Yahweh: seven days ye must eat unleavened bread. In the first day ye shall have an holy convocation: ye shall do no servile work therein... In the seventh day is an holy convocation: ye shall do no servile work therein." Leviticus 23:4-8*

Save the dates and plan to join us for the Lighted Way Ministries Spring Retreat. As the schedule shows on the following page, Passover is Sunday, April 13 this year. This means that the Spring Retreat, for Passover and Unleavened Bread, will begin with the Passover Meal and Program.

All meetings shown on the schedule will be broadcast on our Vimeo, Youtube and Rumble channels. To join us online, go to [www.lightedway.org](http://www.lightedway.org). During the retreat, the video links for that day will be put up on our website homepage for your convenience. Here's what you can expect at this year's Spring Retreat:

### Sanctified Living Workshop (8-part Series)

—by Mark and Shauna Manfredine

This workshop (for which we are now making an accompanying workbook/handout booklet) is the next level prayerfully designed to follow our *Keys to Living Like You've Been Saved* program.

The workbook for this workshop will be printed and provided, as a hand-out, for those who join us *in person* for this retreat. For those who will be joining us online, the workbook (as a pdf file) will be available/printable from our website. For maximum personal

blessing, we recommend that one workbook be printed for each person (age 12+) who will be joining us for the **Sanctified Living Workshop**.

Topics which we will be covering in this workshop will include:

- **Part 1: "Avoid a Shipwrecked Life"**—join us for a deep-dive into the steps and process of gaining a clear conscience before *Yahweh* and man.
- **Part 2: "Find True Success"**—learn how to more fully abide in Christ through the practice of engraving Scripture (*which is far more in-depth than memorization*).
- **Part 3: "Shelter Under Yahweh's Wings"**—discover why submission under authority is vital to enjoying Divine Protection. And learn what godly submission looks like and how to practice it.
- **Part 4: "Overcome Wrath"**—we are not to practice "anger management". *Yahweh* is calling us to full victory. Discover practical ways to overcome an anger problem.
- **Part 5: "Overcome Bitterness"**—become fully free from the toxic poison of bitterness and learn how to keep from becoming bitter in the next trial.
- **Part 6: "Live in Moral Purity"**—learn how to live fully free from sexual sin in your life and thought life and be delivered from the dark pathway of spiritual reprobation.

- **Part 7: "Accept the Design"**—*Yahweh* has designed you with several "unchangeable characteristics". Discover what they are and learn to appreciate your Creator's wisdom, love and design - of **you**.
- **Part 8: "Pray with Power"**—Learn how to listen so that *Yahweh* will speak, and speak so that *Yahweh* will listen in order to transform your prayer life to effectual fervency.

### Weapons of Warfare (4-part Series)

—by Mark and Shauna Manfredine

This Spiritual Warfare series is prayerfully designed to be eye-opening and Scripturally instructive for effective Spiritual Warfare. See the schedule on the following page for titles/topics.

There will also be plenty of time for praise, fun, fellowship and other joys that make a true Feast!

There is no charge for attending this retreat. Meals, shown on the schedule, are provided by Lighted Way Ministries. The workshop workbook will also be provided (*for all attending, in person*). Please contact us to RSVP to ensure that we have sufficient food, seating, craft supplies, and printed materials. We hope you can join us!





Lighted Way Ministries

Passover/Unleavened Bread Retreat Schedule: April 13-20, 2025

	Passover	Feast of Unleavened Bread						
Time	Sunday April 13	Monday U.B. Sabbaton April 14	Tuesday U.B. Day 2 April 15	Wednes- day U.B. Day 3 April 16	Thurs- day U.B. Day 4 April 17	Friday U.B. Day 5 April 18	Sabbath U.B. Day 6 April 19	Sunday U.B. Day 7 & First Fruits April 20
10:00 AM		<i>Breakfast - Provided by Lighted Way Ministries</i>						
11:30 AM	Traveling Guests Arrive	Sanctified Living Workshop	Arts & Crafts: Make an easy Candle Jar (Light of Torah)	Visit West Coast Game Park Safari - located in Bandon, Oregon	Arts & Crafts: Make an easy Sun Catcher Butterfly (New Creature in Christ)	Sabbath Prep and Free Period	Sanctified Living Workshop -by Mark & Shauna	
		Part 1: "Avoid a Ship- wrecked Life"					Part 5: "Over- come Bitter- ness"	Part 7: "Yaweh's Design & Your Un- change- ables"
1:00 PM		Break	Fellow- ship and Free Period	Picnic in South Jetty Park (public beach with dog park)	Fellow- ship and Free Period		Break	
1:30 PM		Part 2: "Find True Success"					Part 6: "Live in Moral Purity"	Part 8: "Pray with Power"
4:30 PM		<i>Dinner</i>		<i>Dinner - Provided by Lighted Way Ministries</i>				
6:00 PM	Passover Service  Banquet and Program	Warfare Series	Sanctified Living Workshop	No evening meeting (due to picnic and travel time)	Sanctified Living Workshop	Weapons of Warfare Series		
		Part 1: "Shatter- ing Babylon" by Shauna Manfredine	Part 3: "Shelter Under Yahweh's Wings"		Part 4: "Over- come Wrath"	Part 2: "Equip- ing the Shield" by Mark Manfredine	Part 3: "Defeating Darkness" by Shauna Manfredine	Part 4: "Becom- ing Spiritually Mighty" by Mark Manfredine
7:30 PM		<i>Songs and Praise Around the Campfire</i>						



Mark and Shauna Manfredine  
**Lighted Way Ministries**  
 P.O. Box 742,  
 Canyonville, OR 97417

Lighted Way  
 Ministries

(541) 672-1514  
[www.lightedway.org](http://www.lightedway.org)

**INSIDE THIS ISSUE:**



**and MORE...**

## The Lighted Way News Magazine



**SPRING FEASTS: JOIN US ONLINE OR IN PERSON**

**Passover, April 13, 2025** - Join us (online or in person)!

**Feast of Unleavened Bread, April 14-20, 2025** - Join us (online or in person)! For more information and to RSVP, please visit our website at [www.lightedway.org](http://www.lightedway.org) and/or contact us directly.



**SURGE MESSIANIC WOMEN'S CONFERENCE, July 24-27, 2025**

- Shauna Manfredine has been asked to return as a guest speaker at the 2025 Surge Messianic Women's Conference. This event is

scheduled for July 24-27, in Burnet, Texas, at the Canyon of the Eagles. More information: <https://younityfitness.com/conferences/>.

**WEEKLY SABBATH BROADCASTS: ON SABBATHS, WE BROADCAST ON**

**VIMEO, RUMBLE & YOUTUBE @ 2 PM (PDT)** - For more information go to our website at: [www.lightedway.org](http://www.lightedway.org)



**ONLINE CLASSES - ON SABBATICAL: Shauna Manfredine is taking a necessary writing hiatus from teaching**

**online classes. For this reason, both the Prophecy and Torah classes concluded on March 12** - Shauna prayerfully plans to re-start online classes, in a few months (after completion of her latest book), at a later date to be announced. If you are interested in learning more, and would like to be added to her e-mail blast list to receive class announcements and an invitation to join the classes when they start again, please visit the class blogs and contact Shauna Manfredine directly. Torah class blog: <https://shaunamanfredine.blogspot.com>; Prophecy class blog: <https://shaunamanfredineprophecyclub.blogspot.com>